

CONCRETE DARK  
90x90 cm / 36"x36"  
↘

CONCRETE  
CEMENTOS

## CONCRETE

### SOLID

The CONCRETE series is inspired by the industrial concrete of large North American cities. The collection has been given a natural weathered look with a very controlled colour scale which makes it a sure option to install anywhere in a home or project, both indoors and outdoors.

It comes with an interior and exterior finish to provide continuity, in addition to an innovative design decorated for surfaces with a very minimalist style that will permeate every setting.

La serie CONCRETE se inspira en el cemento industrial de las grandes ciudades norteamericanas. A la colección se le ha conferido un aspecto natural de desgaste con una escala de color muy controlada lo que la convierte en un valor seguro para instalarse en cualquier instancia de la vivienda o proyecto, tanto en interiores como en exteriores.

Se presenta en acabado de interior y exterior para ofrecer continuidad, además se suma una innovadora propuesta decorados en revestimientos con un estilo muy minimalista que harán que impregne cada ambiente.





GLAZED PORCELAIN STONEWARE + STD BODY + RECTIFIED + MATT  
GRES PORCELÁNICO ESMALTADO + PASTA STD + RECTIFICADO + MATE



90x90 cm /36"x36" + 60x120 cm /24"x48" + 60x60 cm /24"x24" + 30x60 cm /11.8"x24"



CONCRETE LIGHT  
SOLID LIGHT



CONCRETE GREY  
SOLID GREY



CONCRETE CREAM  
SOLID CREAM



CONCRETE DARK  
SOLID DARK

CONCRETE GREY  
60x120 cm / 24"x48"  
↘

CONCRETE  
CEMENTOS



AVAILABLE FORMATS: / FORMATOS DISPONIBLES:

PIECES NAME NOMBRE DE LA PIEZA	SIZES FORMATOS (cm)	WORK SIZE DIMENSIÓN DE FABRICACIÓN (mm)	BOX   CAJA			PALLET   PALET			
			PIECES PIEZAS	sqm m <sup>2</sup>	MAX AVERAGE WEIGHT PESO MEDIO MÁXIMO (Kg)	BOXES CAJAS	sqm m <sup>2</sup>	MAX. AVERAGE WEIGHT PESO MEDIO MÁXIMO (Kg)	SIZE PALLET FORMATO DEL PALET (mm)
<b>CONCRETE</b>	90x90	900 x 900 x 9	2	1,620	32,500	32	51,840	1110	950x1060x820
<b>SOLID</b>	90x90	900 x 900 x 9	2	1,620	32,500	32	51,840	1110	950x1060x820
<b>CONCRETE</b>	60x120	600 x 1200 x 9	2	1,440	28,000	36	51,840	1092	840x1200x740
<b>CONCRETE</b>	60x60	600 x 600 x 9	4	1,440	27,000	32	46,080	950	800x1200x740
<b>SOLID</b>	60x60	600 x 600 x 9	4	1,440	27,000	32	46,080	950	800x1200x740
<b>CONCRETE</b>	30x60	298 x 600 x 9	8	1,440	27,000	40	57,600	1140	800x1200x740



SLIM WALL TILE + WHITE BODY + RECTIFIED + MATT  
AZULEJO DE ESPESOR FINO + PASTA BLANCA + RECTIFICADO + MATE

BIII GL  V.2

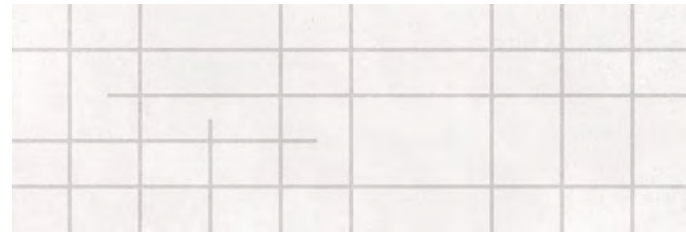


30x90 cm / 11.8"x36"

CONCRETE CEMENTOS



CONCRETE LIGHT



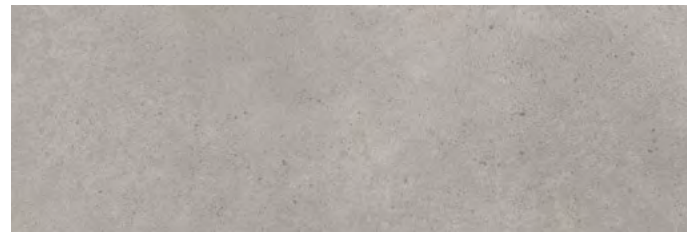
CONCRETE RAIL LIGHT



CONCRETE GREY



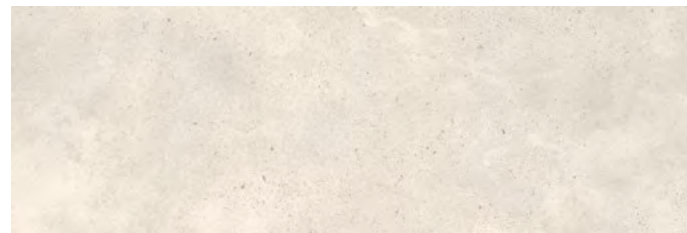
CONCRETE RAIL GREY



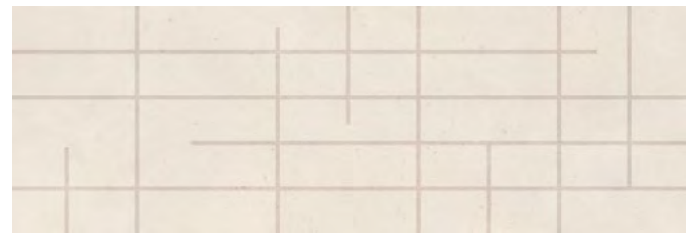
CONCRETE DARK



CONCRETE RAIL DARK



CONCRETE CREAM



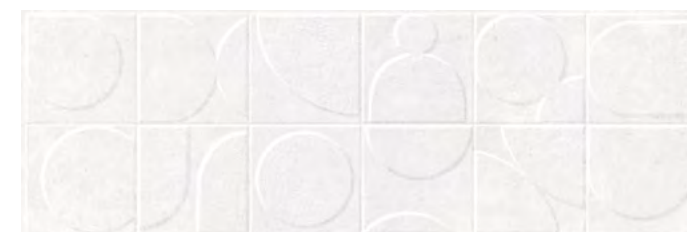
CONCRETE RAIL CREAM

CONCRETE CREAM  
30x90 cm / 11.8"x36"  
↘



AVAILABLE FORMATS: / FORMATOS DISPONIBLES:

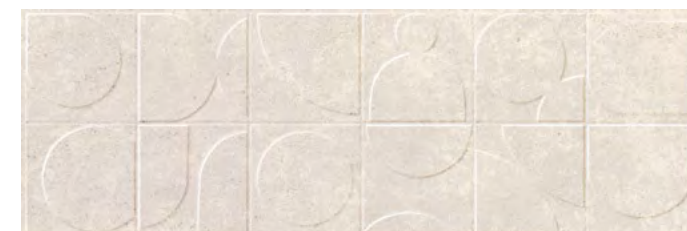
PIECES NAME NOMBRE DE LA PIEZA	SIZES FORMATOS (cm)	WORK SIZE DIMENSIÓN DE FABRICACIÓN (mm)	BOX   CAJA			PALLET   PALET			SIZE PALLET FORMATO DEL PALET (mm)
			PIECES PIEZAS	sqm m <sup>2</sup>	MAX. AVERAGE WEIGHT PESO MEDIO MÁXIMO (Kg)	BOXES CAJAS	sqm m <sup>2</sup>	MAX. AVERAGE WEIGHT PESO MEDIO MÁXIMO (Kg)	
CONCRETE	30x90	300 x 900 x 7	6	1,620	19,500	63	102,060	1240	920x1230x1040
CONCRETE BEELINE	30x90	300 x 900 x 8,7	5	1,350	19,000	63	85,050	1210	920x1230x1040
CONCRETE BUBBLES	30x90	300 x 900 x 8,7	5	1,350	19,000	63	85,050	1210	920x1230x1040



CONCRETE MOON LIGHT



CONCRETE MOON GREY



CONCRETE MOON CREAM



CONCRETE MOON DARK



WALL TILE + WHITE BODY + MATT  
AZULEJO + PASTA BLANCA + MATE

20x60 cm / 8"x24"

BIII GL  



CONCRETE LIGHT



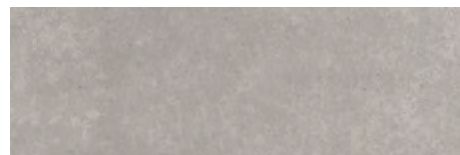
CONCRETE WIND LIGHT



CONCRETE GREY



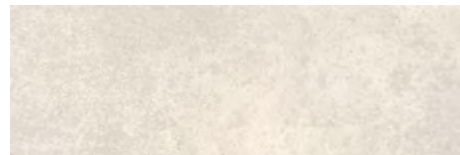
CONCRETE WIND GREY



CONCRETE DARK



CONCRETE WIND DARK



CONCRETE CREAM



CONCRETE WIND CREAM

CONCRETE CREAM  
20x60 cm / 8"x20"  
↘

CONCRETE WIND CREAM  
20x60 cm / 8"x20"  
↘

CONCRETE CREAM  
60x120 cm / 24"x48"  
↘

CONCRETE  
CEMENTOS

AVAILABLE FORMATS: / FORMATOS DISPONIBLES:

PIECES NAME NOMBRE DE LA PIEZA	SIZES FORMATOS (cm)	WORK SIZE DIMENSIÓN DE FABRICACIÓN (mm)	BOX   CAJA			PALLET   PALET			
			PIECES PIEZAS	sqm m <sup>2</sup>	MAX. AVERAGE WEIGHT PESO MEDIO MÁXIMO (Kg)	BOXES CAJAS	sqm m <sup>2</sup>	MAX. AVERAGE WEIGHT PESO MEDIO MÁXIMO (Kg)	SIZE PALLET FORMATO DEL PALET (mm)
CONCRETE	20x60	200 x 601 x 9	10	1,200	19,500	64	76,800	1,170	800x1200x940
CONCRETE WIND	20x60	200 x 601 x 9	10	1,200	19,500	64	76,800	1,170	800x1200x940

